

Volume 33, Issue 3 and 4 **Fall 2025 and Winter 2026**

From the Superintendent's Desk

By Bob Miller, Superintendent, Gateway Division

Well, 2026 is off to a great start! I trust that you all had a wonderful start to the New Year.

The Division has an opening that need to be filled as soon as possible! We need a Activities Chair. This person replaces Ron Gawdzinski who served in this position for many years and arranged some great prototype tours for Division members. Ron worked with the local chapter of the National Railroad Historical Society to arrange the tours, so if you have any connections or are a member of that group, please consider filling this role for the Division. Generally, this Chair will arrange 1 or 2 tours of local railroad sites, industries, or anything else that would interest the members of our Division.

Continued on Page 2

Arrival and departures at Union Station on Ken Kroschwitz's K-10 layout. See Part 2 of the layout photo tour of this amazing layout beginning on page 16.

Table of Contents

Gateway Division Calendar	2
Gateway Division Fall and Spring Meets	5
2026 MCoR Region Convention	6
Upcoming Events	10
In Memoriam: Carl Wessel	12
Membership Update	13
Wilke Earns AP Dispatcher Certificate	13
AP Update: Starting Small	14
Director's Vision	15
Layout Tour: K-10 Layout: Part II	16
Gateway Division 2025 Fall Meet	26
2025 Fall Meet Celebration of Models	28
Gateway Division 2025 Holiday Party	30
Gateway Division 2026 So. Illinois Meet	31
2026 So. IL Meet Celebration of Models	34
Gateway Division Free-Mo Layout Update	36
Station to Station: Sparta, IL	39
Structural Elements: Oconee, IL	40
Meeting Minutes	43
Division Officers and Chairs	47
Club Listings	48
Local Hobby Shop Directory	50

From the Superintendent's Desk (continued from page 1)

This year we tried a Spring meet in Marion, IL on February 7th which I think it was a huge success, and we just broke even. We had approximately 25 vendors with 75 vendor tables and an estimated 418 paid customers with a lot of kids 12 and under in attendance. I'd say the turnout wasn't bad for a first time meet! We decided to return in May 1, 2027. Who knew we had a television star in the Gateway Division. Walter Beckman managed to do a great job advertising the Spring meet, as well as talking up the benefits of the NMRA and the hobby in general on KFVS Channel 12 out of Cape Girardeau. Great Job!

I hate to end this on a sad note, but on January 28th, 2026 the Division lost a long time member Carl Wessel. For those who knew Carl, he was known as the Streetcar Man at the Museum of Transportation. Carl also was a member of the of the Mexico, MO Model Railroad Club. I worked a few GATS shows with him and he was a wealth of knowledge and enjoyed teaching the young children how to operate the HO Division Switching Layout. A tribute to Carl appears later in this issue of the RPO.

Respectfully, Robert (Bob) Miller, Superintendent

Who knew we had a television star in the Gateway Division. Walter Beckman managed to do a great job advertising the Spring meet, as well as talking up the benefits of the NMRA and the hobby in general on KFVS Channel 12 out of Cape Girardeau. Great Job!



We need
YOU!

"They always say time changes things, but you actually have to change them yourself."

Andy Warhol

CALLING ALL MEMBERS...

The **Gateway Division** is currently in need of members to fill an open position:

- **Activities Coordinator** (if you have a connection with the NRHS and/or NMOT please consider assisting the Division in this area).

The **Mid-Continent Region** is also looking for volunteers to assist with Google (including Google Meets, website hosting, and data storage) as well as other initiatives that impact all of the Divisions in the Region. If you've been less than satisfied with the Region, here is your chance to lend a hand and help us make the change you want to see!

If interested, contact Bob Miller, Superintendent, at bobnjoanstimo@gmail.com. We can't do this without you!

2026 Gateway Division Meeting Calendar



April 20, 2026, 7:30 p.m.

Member Meeting with Presentation

Oakville Elks Lodge
2726 Oakville Elks Lane, St. Louis, MO

May 16, 2026, 9:30 a.m.

Hands-on Workshop with Free-Mo Layout Work Session Following Workshop

West Alton City Hall
111 Richard Drive, West Alton, MO

June 15, 2026, 7:30 p.m.

Member Meeting with Presentation

Oakville Elks Lodge
2726 Oakville Elks Lane, St. Louis, MO

July 20, 2026, 7:30 p.m.

Member Meeting with Presentation

Oakville Elks Lodge
2726 Oakville Elks Lane, St. Louis, MO

August 15, 2026, 9:30 a.m.

Hands-on Workshop with Free-Mo Layout Work Session Following Workshop

West Alton City Hall
111 Richard Drive, West Alton, MO

September 21, 2026, 7:30 p.m.

Member Meeting with Presentation

Oakville Elks Lodge
2726 Oakville Elks Lane, St. Louis, MO

October 19, 2026, 7:30 p.m.

Member Meeting with Presentation

Oakville Elks Lodge
2726 Oakville Elks Lane, St. Louis, MO

November 7, 2026, 9:00 a.m.

Fall Meet

VFW Post 5691
1234 Vandalia St, Collinsville, IL

November TBD, 2026, TBD p.m..

Holiday Party

Location TBD

December 21, 2026, 7:30 p.m.

Member Meeting with Bring and Brag and Mini Swap Meet

Oakville Elks Lodge
2726 Oakville Elks Lane, St. Louis, MO



Upcoming Free-Mo Layout Work Sessions



GATEWAY DIVISION FREE-MO LAYOUT

April 18, 2026, 9:30 a.m.

Free-Mo Layout Work Session

West Alton City Hall
111 Richard Drive, West Alton, MO

May 16, 2026, 9:30 a.m.

Hands-on Operations Workshop with Free-Mo Layout Work Session Following Workshop

West Alton City Hall
111 Richard Drive, West Alton, MO

June 20, 2026, 9:30 a.m.

Free-Mo Layout Operations Session

West Alton City Hall
111 Richard Drive, West Alton, MO

July 18, 2026, 9:30 a.m.

Free-Mo Layout Work Session

West Alton City Hall
111 Richard Drive, West Alton, MO





The Gateway Division of the National Model Railroad Association

November 7, 2026

Annual Fall Meet

**VFW Post 5691
1234 Vandalia Street
Collinsville, IL**

May 1, 2027

**Southern Illinois
Model Train Meet**

**The Pavilion
1602 Sioux Drive**

**Model Train
Vendors
Presentations and
Workshops
Door Prizes
Silent Auctions
Operating Layouts
On Site
Layout Tours
Model Displays
and Contests
NMRA
Achievement
Program
Evaluations
And More....**



nmra.org



gatewaydivisionnmra.org

2026 Mid-Continent Region Convention

By Marty Vaughn, President, Mid-Continent Region, NMRA

MCoR 2026 Convention

July 23-25, 2026

Collinsville Convention Center, Collinsville, IL

Mark Your Calendar!

Join Us in Collinsville!



This year's convention is a joint convention with the RPM Meet! One registration gets you into ALL the RPM events and the MCoR events including our Contest and Saturday Night Banquet!



There will be lots of vendors at the Collinsville Convention Center ready to sell you all the part items you are looking for! There will be clinics and contests.

You can enter both the RPM contest and the MCoR contest (you just can't enter the same model in both contests). In addition to the regular NMRA MCoR contests, there are TWO special MCoR Contests this year. We are doing both a Square Footer AND a Photo Match contest. The Square Footer is open to any scale as long as the entry fits on a 12"x12" base. The Photo Match can also be any scale, just bring the photo, painting, or illustration of the scene

you are modeling. The Light Iron Award, a privately sponsored award, will also be eligible for award in the MCoR contest. This award is presented to the model that best represents the spirit of Narrow-Gauge Modeling and is selected by the sponsors.



WHITE ELEPHANTS ANYONE??

As an added event we are offering space to display and sell up to 10 of your White Elephant items or any of your treasures you have decided you can let go (to make room for more!). Just bring your item, add the price and we'll collect for any items sold that you can collect at the end

of the convention. We will also be conducting our regular raffle at the banquet. Any items you would like to donate will be raffled off for the MCoR (including any of those White Elephants that didn't sell).



We have a special rate for the Convention with the Double Tree by Hilton for \$118 plus tax per night. The hotel is located just across the street from the Convention Center and in easy walking distance. We also have a special \$8 breakfast deal with the hotel. Just use the link below to make your reservation online and it takes you directly to the MCoR room rate.

<https://www.hilton.com/en/book/reservation/deeplink/?ctyhocn=STLCNDT&groupCode=93P&arrivaldate=2026-07-23&departuredate=2026-07-26&cid=OM,WW,HILTONLINK,EN,DirectLink&fromId=HILTONLINKDIRECT>

Doubletree by Hilton Collinsville – St. Louis
1000 Eastport Plaza Drive, Collinsville, IL 62234
DoubleTreecollinsville.com | [Become a fan on Facebook](#)



To learn more about the RPM events and forms for entering models in their contest use this link:
<https://www.stlrpm.com/resources>

All Photos by Jeff Cooper and used with his permission.



MCoR 2026 Convention Registration Form

July 23-25, 2026

Collinsville Convention Center, Collinsville, IL

Name of Primary Registrant: _____

NMRA Number: _____

Spouse or other Additional Registrant: _____

Your spouse is considered and NMRA member for convention registration

Spouse NMRA Number if also a Member: _____

Address: _____

City: _____ State: _____ Zip Code: _____

Email: _____ Phone #: _____

Registration Fee NMRA # Required for Reduced Registration Fee

Check your Banquet Choice:

Chicken Mudega _____ Herb Pork Tenderloin _____ Vegetarian _____

	<u>COST</u>	<u># Persons</u>	<u>Total Cost</u>
<u>NMRA Member (includes full RPM registration)</u>	<u>\$98</u>	_____	_____
<u>Non NMRA Member (includes full RPM registration)</u>	<u>\$130</u>	_____	_____
Total Registrations			_____

Send Completed Registration Forms and payment to:

Bill Humenczuk

8624 West 116th St

Overland Park, KS 66210-2828

Upcoming Events

Thanks to the Mississippi Valley N Scalers for Maintaining the Show Calendar

April 11, 2026 10 a.m. to 3 p.m.: Lemay American Legion Train Show: 9305 S. Broadway, St. Louis, MO

April 18, 2026 10 a.m. to 3 p.m.: 11th Anniversary Railroad Swap Meet
Sponsored by Iron Spike Model Train Museum: Washington City Auditorium,
211 High Street, Washington, MO

May 9, 2026 9 a.m. to 2 p.m.: Train Day at the Eureka Library: 500 Workman Road, Eureka, MO

May 23, 2026 10 a.m. to 2 p.m.: After the Storm Train Show: Arnold Eagles Hall,
1725 Jeffco Blvd, Arnold. MO

June 13, 2026 10 a.m. to 4 p.m.: 12th Annual American Heritage Railroad Train Show: American Farm Heritage Museum, 1395 Museum Avenue, Greenville, IL

June 27, 2026 9 a.m. to 2 p.m.: Patriotic Theme Train Day at the Grant's View Library: 9700 Musick Avenue, St. Louis, MO

July 18, 2026 9 a.m. to 2 p.m.: Trains at the Fenton Library: 1501 San Simeon Way, Fenton, MO

August 1, 2026 9 a.m. to 1 p.m.: Model Train Tailgate Swap Meet: The National Museum of Transportation, 2933 Barrett Station Rd, Parking Lot #2, St. Louis, MO

August 29, 2026 10 a.m. to 3 p.m.: Boeing Employees' Railroad Club - St. Louis Swap Meet: Greensfelder Recreation Complex at Queeny Park, 550 Wiedman Road, St. Louis MO

Check out the new Gateway Division website at:

gatewaydivisionnmra.org

or

gatewaydivisionnmra.com

June 23-27, 2026



July 23-25, 2026



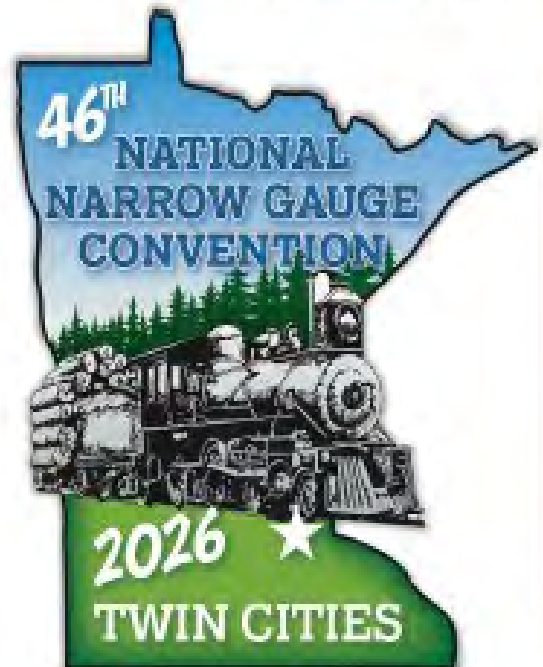
**St. Louis Railroad
Prototype Modelers
Meet**
The largest annual RPM event
in the U.S.

The Gateway Center
1 Gateway Center Drive
Collinsville, IL

July 27-August 2, 2026



September 2-5, 2026



In Memoriam: Carl Wessel

By Jim Ables, Past Superintendent, Gateway Division



We are saddened to announce the passing of Carl Wessel. Carl was an active member of the Gateway Division for many years. He was always quick to volunteer to support our appearances at local train shows and help out with the Fall Meet. The Gateway Division offers our sincerest condolences to Carl's family and friends. May you find peace during this difficult time.

Obituary:

Carl B. Wessel

August 12, 1949 — January 28, 2026

Cottleville, Missouri

Carl B. Wessel, of Cottleville, MO, passed away Wednesday, January 28, 2026, at the age of 76. Beloved husband of 50 years to Brenda Wessel; cherished son of the late Carl F. and Alta Wessel; devoted father of Matthew (Amanda) Wessel and Heather Wessel; loving grandfather of Breanne Wessel, Jocelyn Wessel and Natalie Wessel; dear brother-in-law of Douglas (Michelle) Leiding.

Carl honorably served in the United States Army. He was passionate about trains throughout his life. Carl's professional career was engineering, including maintenance and design work on the second extension of the MetroLink in Illinois. After retirement, he was actively involved in multiple model railroad clubs across the region and was proud to give an annual presentation at the University of Wisconsin for engineering students. Carl also volunteered at the National Transportation Museum, where he worked on restoring historic streetcars. Carl was dearly loved and will be greatly missed by all who knew him.

Memorials may be made in Carl's name to the National Transportation Museum.

**THE NATIONAL MUSEUM OF
TRANSPORTATION**

**2933 Barrett
Station Road
St. Louis, MO
63122**

SPRING/SUMMER

MARCH 1 - LABOR DAY/SEPT. 7

Open Daily

9:00 am - 4:00 pm

Closed April 5

Closes at 2:00 pm on July 4th

FALL/HOLIDAY

SEPTEMBER 8 - DECEMBER 31

Wednesday - Sunday:

9:00 am - 4:00 pm

Holiday Extra Hours:

December 21, 22, 23, 28, 29, 30

9:00 am - 4:00 pm

Closed Thanksgiving Day, Christmas Eve,
Christmas Day and New Year's Eve.

MISSION

The National Museum of Transportation will be the leader in protecting and interpreting North American transportation heritage. As stewards of our heritage, we will provide engaging education programs, interactive and interpretive exhibits, and conserve transportation history for the next generations.

VISION

The Museum's successful operation depends on eight equally important units known as our 'drive wheel': Education • Exhibits Interpretation • Grounds & Facilities • People • Events & Outreach • Guest Services • Restoration & Preservation • Library & Archives. The unified force of the 'drive wheel' successfully moves the Museum forward.

Membership Update: July 2025 through December 2025

Membership Anniversaries

Thank You!

30 Years

Greg Gramlich, MMR

25 Years

Jimmy Ables

William Wiese

20 Years

Michael Harper

15 Years

David Bufka

Ali Shahriary

10 Years

Dan Knipp

William Freund

Carol Meigs

Willie Richter

5 Years

Barry Miller

Edward Ellison

Michael Dunnington

New Members

Welcome!

John Michael Huebner

Christopher Seifried

Kevin Zopp



Fred Wilke Earns AP Chief Dispatcher Certificate

By Jeff Cooper, Clerk and RPO Editor, Gateway Division

At the October 2025 membership meeting, Dave Ackmann, Achievement Program Chair (right) presents Fred Wilke (left) with his Achievement Program Chief Dispatcher Certificate. Congratulations, Fred!

To qualify for the Chief Dispatcher Certificate, the individual must participate in the operation of a model railroad for no less than fifty hours. A minimum of ten hours must be served in three of the following categories, one of which must be Dispatcher:

1. Engineer (mainline freight, passenger, or way freight)
2. Yardmaster, Station Master
3. Hostler, Power Desk
4. Tower Man, Traffic Manager, Road Master
5. Dispatcher



Achievement Program Update: Starting Small

By Dave Ackmann, Achievement Program Chair, Gateway Division

Not surprisingly, I am a big advocate of the NMRA Achievement Program (the "AP"). The AP has spurred me and others to expand our skills in ways which we otherwise might never have attempted, and also to be recognized for what we achieved. Achievements in scratch building items like Structures, Scenery, Cars or Motive Power can be particularly rewarding but also initially intimidating, so why not start with something small?

If you have ever been to a train show (and who hasn't) you may have found one or more vendors selling detail parts, things like figures, building interiors or loads for flat cars or gondolas. And so it was when I attended the MCoR Convention in Kansas City in August where I saw the tables of one Dave Rush, featuring a massive display of open loads; things like wrapped lumber, coal, flat metal sheets and so on (<https://www.facebook.com/ShowMeDetails>). He had really nice stuff, and I spent about 70% of my budget at his tables, acquiring samples to jog my memory.

Before the end of 2025, I submitted my SOQ (the AP "Statement of Qualification") for the AP Structures Certificate, and am looking for a new challenge. It's going to be for "Cars". I have never built a piece of rolling stock in my life, but I am going to give it a try, by starting small with some "Open Loads" for a flat car or gondola I will eventually create.

But where to start? The Internet, of course. Inspired by what I saw in KC, I searched YouTube for videos on creating wrapped lumber loads, and found a great one at <https://www.youtube.com/watch?v=O3stBoSXLmA>. Next I searched for one on coal loads and can recommend the one at <https://www.youtube.com/watch?v=kLSS3J5uUuc&t=33s>. I enlarged my search to just "Open Loads Model Trains" and hit the "Mother Lode". Beyond wrapped lumber and : coal, I found information on creating loads of pipes, I-beams, flat steel, ties, retired wheel sets, crushed metal, scrap loads and even more. Even if I never make a single piece of rolling stock, I now have ideas and samples to fill all the empty cars I already have, and I can create them myself. It's easy, fun and rewarding!

Beyond the Internet, don't forget the NMRA Digital Magazine. Bob Frankrone's regular column "Love Those Loads" is also a wealth of information. There are also books on the subject.

It's taken me 3 years to complete the 6 Merit Award winning structures required for the AP certificate, but I have enjoyed every part of the journey, and my models improved each step of the way. We all have to start somewhere, and "Open Loads" are going to get me started with Cars.

After all, my new cars must have something profitable to transport, and there is nothing like a custom load, either my own or one from a talented vendor to increase visual interest...

Interested in the AP? Just let me know! You can drop me an e-mail at ackmanns@charter.net.



Photo courtesy of Show Me Details Model Railroad Co.

Director's Vision

By Greg Gramlich, MMR, Region Director, Gateway Division

I want to thank the membership of the Gateway Division for electing me as the new Region Director. There are many changes developing in the NMRA and the Gateway Division will be a part of both Regional and Division activities to provide value to all of our members. Through these activities, it is the goal to retain current members while attracting new members.

New membership is my number one priority as Region Director. I plan on working with the Division Membership Chair, Glenn Koproske, on ways to increase membership. It appears our membership is flat or decreasing with some members moving out of town, members who are unable to participate in Division activities due to transportation issues (especially driving at night), or just plain worn out. I understand all of that but now with Zoom you can still be a part of the group. If you have e-mail and a computer, tablet, cell phone, or other device, simply connect to the membership meetings. If you are not receiving the e-mail invites to the meetings, please reach out to me at headbigbear@yahoo.com and let me know so we can get you on the e-mail list.

As for as new members there is a 'NEW' National Model Railroad Association look with a new logo and ten-year strategic plan. Since 1935, the organization has provided education, standards and fellowship. We need to seek out possible new members at our churches, schools, other organizations, work, and even in our own neighborhoods. There is nothing wrong asking a person did he or she ever have a model railroad in their lifetime. This one question could open the door for a possible new member.

We need to seek out possible new members at our churches, schools, other organizations, work, and even in our own neighborhoods.

Thank you,

Greg Gramlich MMR, Region Director, Gateway Division, NMRA



Scenes from Greg Gramlich's Bear Creek Model Railroad. Photos by Jeff Cooper

Photo Tour of Ken Kroschwitz's K-10 Layout: Part 2

Layout Description from the Gateway 2022 National Convention Time Table and by Richard Schumacher on the Gateway Division Website. Photos by Jeff Cooper



In Part 2 of the Photo Tour, we continue to take a look at Ken Kroschwitz's K-10 HO scale layout. It was started in March 1998 in a 60-ft by 81-ft room located next to a hobby shop inside a warehouse. The purpose of the layout is to demonstrate new products and techniques. The layout includes three major railroads, the Santa Fe, Union Pacific, and Southern Pacific, that all interchange with each other. There are also two shortlines and five major industries. See the Volume 33 Issue 2: Summer/Fall 2025 RPO for Part 1 of the K-10 layout Photo Tour.





















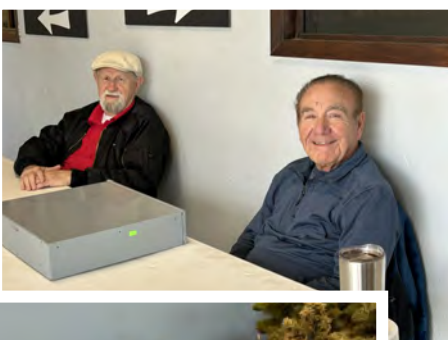
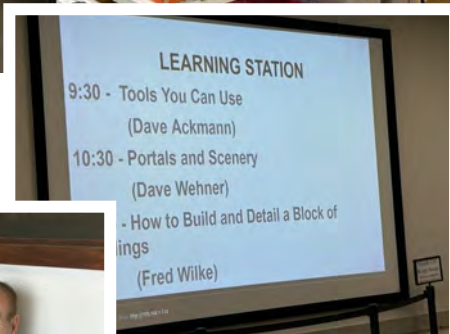
The Gateway Division 2025 Fall Meet Was a Success

By Walter Beckman, Gateway Division, Chair of Fall and Spring Meets

The Gateway Division of the NMRA held its annual Fall Meet at VFW Post 5691 in Collinsville, Illinois on Saturday, November 1, 2025.

This year's Fall Meet featured over twenty vendors who rented over 45 tables, raffles, attendance prizes, presentations, and two layout tours. The contest room had over 30 entries with room for more. Special thanks to the Jefferson County and Southern Model Railroad club and Chris J. Rathert, of the American Flyer S-gauge club, for setting up and operating layouts at the Fall Meet. The VFW Post offered food service providing a much needed service for the vendors, layout operators, and guests.

The Gateway Division extends a special "thank you" for the volunteers who helped make the Fall Meet a success. John Kelly managed the entry tickets, while Dale DeWitt and Chris Oestreich handed out the attendance prizes. Layout tours were organized by Dave Roeder, MMR. Dave recruited the layout owners and created the maps and directions that were handed out at the meet. Dave also provided the table layout for the meet after measuring the spaces in the VFW Post. Dave Ackmann, Dave Wehner, and Fred Wilke conducted excellent presentations. Willie Richter organized the audio/visual duties and coordinated seamlessly with the VFW staff. David Lowell, MMR ran the Contest room with assistance from Jim Ables. Dave Ackmann oversaw the activity in regarding to AP side of things.



The Gateway Division also extends our appreciation to those who donated items for the attendance prizes and raffles. Many of the American Model Builder structures that were donated to the Gateway Division last year, as well as donations provided by John Schindler, Bill Levin, Ron Gawedzinski, and Walter Beckman, were raffled to several lucky winners.

Attendance for Fall Meet 2025 was not as strong as previous years (127 paid attendees vs 200 on previous years). Trainfest in Milwaukee was held the same weekend and may have weakened attendance. For a video recap of the Fall Meet, Dirk Reynolds of Dirk's Trains posted his review of the Fall Meet on his You Tube channel.

The Fall Meet 2026 will be on November 7, 2026 at VFW Post 5691, 1234 Vandalia, Collinsville, IL 62234. If you have any interest in donating items, making a presentation, or volunteering, please contact me at wrbbee@gmail.com. We hope to see you there!



The 2025 Fall Meet Celebration of Models

By David Lowell, MMR, Gateway Division, Photos by Jeff Cooper

Judged Models

Diesel Locomotive, Kit Built

1st Place: Greg Gramlich, MMR



Online Structure, Scatchbuilt

1st Place: Dave Ackmann



Online Structure, Scatchbuilt

2nd Place: Dave Ackmann



Offline Structure, Scratchbuilt

1st Place: Dave Ackmann



**Offline Structure,
Scratchbuilt**

2nd Place: Dave Ackmann



Module

1st Place: Bob Miller



Popular Vote

Freight Cars

1st Place: Don Schnurpfel



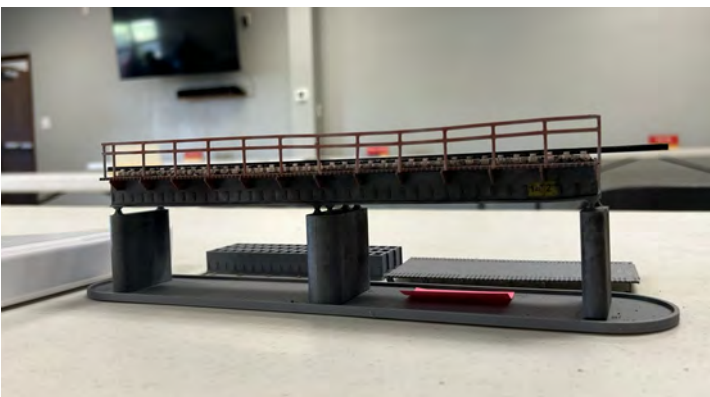
Diorama

1st Place: Danny Brock



Online Structure

1st Place: Dave Ackmann



Offline Structure

1st Place: Jeff Cooper



Photos

1st Place: Chris Oestreich

Celebrating Good Times at the 2025 Holiday Party

By Walter Beckman, Gateway Division, Chair of Fall and Spring Meets

The 2025 holiday party was held at "Salt & Smoke" located at 4130 Rusty Rd, St. Louis, MO 63128. The private room provided a relaxed atmosphere of fellowship and the food was excellent. Division members and their guests shared food and drink while sharing stories and telling tales. At the end of the evening, several attendees won prizes that were generously donated for this gathering.

Ron Gawedzinski was presented with the Hank Kraichely Award for his support to the hobby and the Gateway Division. Ron moved to Texas in early December 2025 to be near family. His presence will be missed.

Everyone ordered off the menu and paid their own bills which allowed everyone to enjoy their favorites. The Gateway Division paid the gratuity for the group. At the end of the evening, several attendees won prizes that were generously donated for this gathering.

It was a true celebration of the friendships, the food, and the hobby. It was an evening filled with laughs and lively conversations. It was an gathering to celebrate the holidays and enjoy good company. This is what the Gateway Division and the NMRA does, it bring good people together to share good times.



The Gateway Division 2026 Southern Illinois Model Train Meet Was a Huge Success!

By Walter Beckman, Gateway Division, Chair of Fall and Spring Meets

In a new venture, the Gateway Division held its first train meet at the Pavilion, in Marion, Illinois on February 7, 2026. There has not been a train show or swap meet in this area for at least 15 years so the area was long overdue for a visit from the Gateway Division. The snow from previous week's winter storm had mostly melted by the day of the event. With a long absence of train shows in the area and a hefty amount of cabin fever, the event attracted 418 paid attendees. Add in all of the kids who got in free and it is estimated that total attendance was over 500 total visitors.

The Fall Meet featured over seventy-five vendor tables, five layouts, attendance prizes, silent auctions, clinic presentations, model contests, and a layout tour of the spectacular Chuck's Depot layout. The five on site layouts included the Gateway Division Free-Mo CB&Q layout, the amazing Jefferson County & Southern layout, the New Switzerland Model Railroad Club O scale layout (along with an HO scale layout they are raffling off), a large Lego layout, and a small Lego layout. The Gateway Division offers our sincere appreciation to all the layout groups who took the time to travel to Marion to set up their layouts that were greatly enjoyed by the hundreds of visitors.

The silent auction was held in two rounds that provided an opportunity for hobbyists to buy items for a very reasonable price that were donated by American Model Builders. The first round closed at 11:00 am and the



second closed at 2:00 pm. The silent auction was a success to help defray the costs of the meet and the auction winners were elated with their bounty.

Attendance prizes were drawn every 15 minutes over the course of the day which gave a chance to all visitors to take something home for free. Attendees gathered around the white board to check their numbers resulting in happy winners and many who groaned by missing a prize by just one digit.

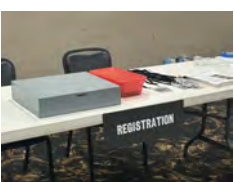
The Division meets cannot be successful without the help of volunteers. David Lowell, Jim Ables, and Dave Roeder kept the contest room active. Contest judging was performed by Bob Miller, Dave Roeder, Fred Wilke, and Greg Gramlich. Bob Gibson managed the attendance prizes and silent auctions. Fred Wilke handled the Gateway Division recruitment table. Dan Knipp and others manned the registration table. Thank you to all of the volunteers who helped make this event a great success.

As is customary with a Gateway Division Meet, clinics and presentations were available all morning and into the early afternoon for Division volunteers to share their knowledge and experiences with attendees. Willie Richter and Charles Marshall conducted a clinic on building Free-Mo modules. Dave Wehner presented his informative clinic entitled "Details for Your Layout", Dave Ackmann presented an excellent clinic on 3D printing, and Fred Wilke reprised his presentation on modeling a city block.



In addition to Gateway Division personnel, the Southeast Missouri Model Railroad Club provided volunteers to assist with registration and vendor liaison duties. The Gateway Division appreciates their assistance and we were happy to see them there!

The event venue, The Pavilion, is a great, spacious venue with ample free parking, free wi-fi, on-site concessions, large clean restrooms, and plenty of space to take a break and catch up with friends. The event will return to the Pavilion on May 1, 2027 so mark your calendars.



The 2026 Southern Illinois Meet Celebration of Models

By David Lowell, MMR, Gateway Division, Photos by Jeff Cooper

Popular Vote

Diesel Locomotive

1st Place: Dave Roeder, MMR



Structure

1st Place: Jeff Cooper



Passenger Car

1st Place: Dave Roeder, MMR



Freight Car

1st Place: Dave Roeder, MMR



Popular Vote

Caboose

1st Place: Dave Roeder, MMR



Diorama

1st Place: Dave Roeder, MMR



Railroad Pass

1st Place:
Dave Wehner



Achievement Program Merit Award

Structures

Walter Beckman



Building the Burlington: Update on the Gateway Division Free-Mo

By Jeff Cooper, Clerk and RPO Editor, Gateway Division

Members continue their progress on the Gateway Division CB&Q Free-mo layout. The goal in the Fall of 2025 was to get the layout operational. It didn't have to have all of the sidings and yards installed, but it needed to have the mainlines complete, wired, and fully operational as the layout was scheduled to make its public debut at the Christmas event at the West Alton City Hall. The group met its goal and the Christmastime debut was a complete success. Attendees of the festivities watched in holiday glee as the layout performed virtually flawlessly for several continuous hours. Once Christmas came and went, there was more movement in mind for the modules.



Getting Ready for the Holidays!



First, the layout moved to a new home not too far away from where it started. The modules first came to life on the main floor of West Alton City Hall. With the turn of the new year, it's new home became the basement of West Alton City Hall. The move allows the layout to remain in place rather than having to be disassembled and stored after each work session. The new home suits it well and has also allowed opportunities to change the arrangement of the modules.

The next big movement for the layout was to make its traveling debut at the Southern Illinois Model Train Meet in Marion, Illinois on February 7, 2026. Willie Richter built rolling storage racks for the modules and generously donated the use of his box trailer and truck to bring the modules to Marion. As with any traveling layout there were minor things to repair and adjustments to be made on the fly, but it all came together by the time the doors opened to the public. Even though the layout did not feature scenery or structures, interested onlookers stopped by with quite a few people interested in learning how to build free-mo modules. It didn't hurt that Willie and Charles Marshall also conducted a clinic that morning on building free-mo modules. Attendees of their clinic got to see the theory placed into practice.

On the Road at Marion, Illinois



The modules returned home and work resumed on the layout later in February. By the time the March work session rolled around, the layout grew by several modules as the areas representing West Alton, MO and Louisiana, MO grew by one module each. New curved end modules were in the process of being placed in service with wiring and track being installed.

The layout work sessions are scheduled for the third Saturday each month beginning at 9:30 a.m. and ending mid-afternoon. The West Alton City Hall is located at 111 Richard Drive, West Alton, MO. All Division members are welcome to come to the work sessions regardless if you are building one of the modules or not, Coming to the work sessions is a great way to learn how to build modules, wire, lay track, create scenery, and build structures. We can always use a helping hand. If you would like more information, reach out to Greg Gramlich, MMR at headbigbear@yahoo.com.



Station to Station: Sparta, Illinois

By Jeff Cooper, Clerk and RPO Editor, Gateway Division

Station to Station is a regular feature that highlights depots and stations in the Gateway Division whether they still exist or have since faded into history.

The former Mobile & Ohio/Gulf Mobile & Northern/Gulf Mobile & Ohio/Illinois Central Gulf station stands in Sparta, Illinois. Sparta, population 4,095, is located in Randolph County and is 50 miles southeast of St. Louis.

The original line through Sparta was part of the narrow gauge Cairo & St. Louis Railroad built in 1875. When the Mobile & Ohio reached the Ohio River, they saw the C&StL as their way into St. Louis. The M&O took over the C&StL in 1886 and converted it to standard gauge in 1913.

The Cairo & St. Louis built the original wooden depot in 1879 on the site of the current station. In 1907 a fire destroyed the depot and the M&O built the current station using the same floor plan as the original structure, but used brick from the local kilns to build the 13-inch thick walls of the station.

The last passenger train stopped in Sparta in 1958. Even though passenger service ceased in Sparta, it lived on in film. The station was featured prominently in three scenes in the 1967 movie *In the Heat of the Night* starring Sidney Poitier and Rod Steiger. After its appearance in the movies, the station started to fall into disrepair in the 1970s and at the end, the only part of the building in use was the former west waiting room which was being used as an office. The station closed permanently in 1986.

The station now houses the Roscoe Misselhorn Gallery. Mr. Misselhorn was a noted Midwestern artist who grew up in Sparta. He designed logos, letterhead, advertising, and was a syndicated editorial cartoon artist appearing in 3,000 newspapers nationwide. He sketched places and things that interested him such as bridges, riverboats, and steam engines in the St. Louis and Southern Illinois region. The Gallery displays over 2,000 drawings, sketches, and paintings of these regional scenes. Hours for the Gallery are typically from 1 p.m. to 5 p.m. on Saturdays and Sundays.

Photos of the station from 1998



Structural Elements: Wallar's Cafe, Oconee, Illinois

By Jeff Cooper, Clerk and RPO Editor, Gateway Division

Structural Elements is a regular feature where we will examine both rail and non-rail structures and scenes to bring attention to the details that you can incorporate into your models and layout. **Mundane details tend to be overlooked** as our eyes are looking for the unusual or interesting. **Through this feature, we want to highlight the ordinary and often overlooked details.**

The old Wallar's Café building, later the Farmer's Café, is located on US Route 51 on the outskirts of Oconee, Illinois. Oconee has a population of 141 and is located in Shelby County. Oconee is located 91 miles northeast of St. Louis.

Prior to sliding into dilapidation, this non-descript building was a busy hub of activity for this small farming community. While the exact date of construction is unknown, information provided on the Shelby County IL Facebook page and supplemented by Cheryl Croft, it is known that Harry and Marge Wallar (Cheryl Croft's parents) opened a café here in the early 1950's. The Wallar's rented the front of the building from then owner Warren Bass after their café burned down. The Wallar's later added a few grocery items to the business. Mr. Bass rented the rear section of the building to the State of Illinois to store their road plow. Ms. Croft recounted that during the winter that her dad would leave the café unlocked so that the workers plowing the roads could stop and get some coffee and warm up. Ms. Croft also reminisced that her mom made six pies per day, six days per week (none on Sunday) as dessert for their customers. Ms. Croft later helped her parents by working as a waitress in the café.



The building as it appeared in August 2021. Southeast corner.



The building as it appeared in August 2021. Northeast corner.

Mr. Wallar passed away in 1975 and his widow left the café business. Ralph and Melba Hayes purchased the building and continued to operate the café for many years. Charlie Timmens then took it over from the Hayes family. The exact date the restaurant closed is not know, but it estimated it was in the late 1980s or early 1990s. The building sat vacant for many years used only for storage. The elements and lack of maintenance eventually resulted in building, at least partially, falling into disrepair.

Based on the photos taken in 2021, it appears that the building's fate was sealed. Equipment was moved in and the rear portion of the building was being emptied. It seemed the end was near, but that was not actually the case. A husband and wife team, Rod and Melinda Sarver, had different plans. Rod's aunt and uncle were Ralph and Melba Hayes, the couple who took over the café after Mr. Wallar passed away. In late 2021 and into 2022, the Sarver's demolished the rear portion of the building, rebuilt it, refurbished the old café, and opened a meat cutting business, the Oconee Chop Shop. The business opened in January 2023 and expanded in 2024. The store sells beef, pork, poultry, dairy, eggs, and a line of their own BBQ sauces. What was once a building that was falling into history now has a fresh lease on life and continues to serve this small farming community and surrounding area.



The building as it appeared in August 2021. Southwest corner.



The building as it appeared in April 2023. Southeast corner.
Photo courtesy of the Oconee Chop Shop LLC, Oconee, Illinois,
Rod and Melinda Sarver
<https://www.facebook.com/photo.php?fbid=190219333796319&set=pb.100084247614557.-2207520000&type=3>

Source: Shelby County Facebook Page, information posted by owners of the Facebook page and by CherylEli Croft, December 19-20, 2023

Modeling Considerations

This is a visually interesting structure to model with its two story brick café/store building in the front and the bowstring truss concrete block garage/storage building on the back. It can be modeled in many eras from the 1940s through today.

1940s-1970s

Although the actual construction date is unknown, the review or historic aerial photographs indicate that it was built after 1938. Modeling the structure during this timeframe would include some now missing features including plate glass windows on the front of the café and a flat metal awning that wrapped around the front in a similar fashion to the awning today. The awning had the café sign mounted to it along with several Coca Cola button signs.

1970s-1990s

The plate glass windows were switched out for smaller 6/6 double hung windows and the flat metal awning on front was replaced with the sloped and shingled awning seen in the August 2021 photos.

1990s-2020s

After the café closed, the building was used for storage and/or sat vacant for many years. This would be an opportunity to model a decaying vacant building which defines many small rural communities during this time.

2020s to present

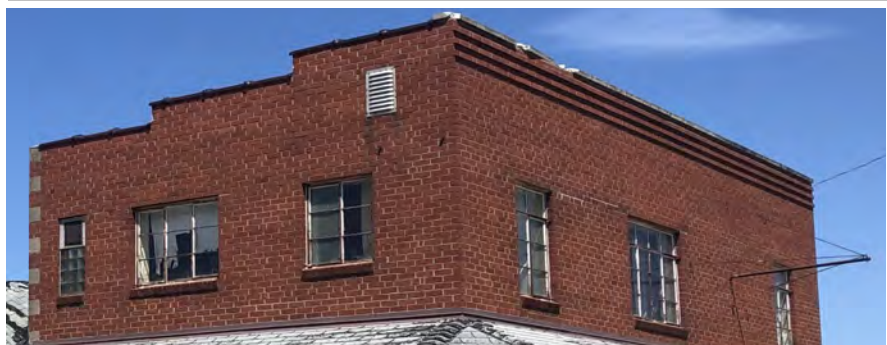
The demolition and replacement of the concrete block garage area with a modern metal building, along with the renovations, windows, paint, and new awning give modelers an opportunity to model a vintage structure in with today's appearance.



Sometime in the 1970s or 1980s, the large plate glass windows were replaced with double hung windows. You can also see where new brick was added to make the window opening smaller. This would be an common, yet overlooked, detail to model on this or any structure to show the building evolving over time.



The back of the brick structure was built with concrete blocks. Much of the wall is not visible and it was cheaper than brick on this non-street facing portion of the building. Note the masonry bond corner with the alternating rows of brick interlocked with the concrete block. This would also be an interesting detail to incorporate into a model.



Other interesting details to note are the vent at the top of the wall, the second floor windows that appear to be original to the building, and the hanging sign bracket on the front.

Meeting Minutes

Meeting Minutes for October 20, 2025

Call to Order

Superintendent Bob Miller called the meeting to order at 7:30 p.m.

Meeting Etiquette

Mr. Miller welcomed in-person and Zoom attendees. Mr. Miller reminded all participants to silence their cell phones, speak one at a time, limit side conversations, and state their name when speaking. Zoom attendees were reminded to mute their lines. Finally, Mr. Miller noted that the business meeting is being recorded.

New Members/Visitors Recognition

Mr. Miller recognized a new member and visitors.

Minutes from the September 15, 2025 Meeting

Mr. Miller presented the minutes from the September 15, 2025 meeting. Jim Ables motioned to approve the minutes as presented. Dave Roeder seconded the motion. *The minutes were approved by unanimous vote.*

Financial Reports

John Kelly presented the September 2025 financial statements and reported the balances in the bank account and CDs, as well as various expenses and receipts during the past month.

Division Modular Layout Update

Greg Gramlich, MMR, presented a video of the progress on the Division Modular Layout. There are 14 modules and 2 turnarounds. Mr. Gramlich noted that a list of cars and engines is needed. The cars will remain with the layout while locomotives and cabooses will stay with the members. The layout will be fully wired and operational by December.

Division Website

Mr. Miller updated the membership on the progress of the new Division website. Mr. Miller noted that the names of new website are gatewaydivisionnmra.org and gatewaydivisionnmra.com. It has not been cataloged on Google yet so members will have to go directly to the website address. Mr. Miller and Bob Amsler are in the process of getting the old website shut down.

Elections

Mr. Ables reported that bios are needed for the candidates for Assistant Superintendent, Clerk, and Region Director. The ballots will go out in November with results being announced at the December membership meeting.

Fall Meet Update

Walter Beckman updated membership on the upcoming Fall Meet. At this time, 32 tables have been rented. Mr. Beckman noted the need for volunteers to sign up and discussed the door prizes and raffles. Finally, Mr. Beckman noted that setup will begin at 6 a.m. on the day of the meet.

Holiday Party

Walter Beckman reported that the annual Holiday Party would be held on November 15th at 6:30 p.m. at Salt & Smoke at 4130 Rusty Road in South County. Attendees will pay for their own meals and drinks while the Division will pay for the gratuity. Mr. Ables reported that he will send out an e-mail to the members.

Club Updates

None

Ask Us Anything

There were no questions asked of the members.

Other Business

It was noted that volunteers have signed up for the Great American Train Show on November 29th and 30th.

Fred Wilke reported that he is having an operating session and that maps are available.

Dave Ackmann presented Fred Wilke with the Achievement Program Chief Dispatchers Certificate. Mr. Ackmann also reminded the members who are working on the Division Modular Layout to track their hours towards the Volunteer Certificate.

Mr. Miller reported that since Ron Gawedzinski was not able to attend the previous member meeting that he stopped by his home to present him with the Henry "Hank" Kraichely Lifetime Achievement Award. Mr. Miller also announced that with Mr. Gawedzinski moving to Texas that the Division needs a new Activities Coordinator.

Upcoming Events

Mr. Miller announced the following upcoming events:

- **November 15, 2025 9:30 a.m. to 2 p.m.: Dupo Train Show**, American Legion, 200 S. 5th, Dupo, IL

50/50 Drawing

The 50/50 drawing was held and Jim Ables was the winner.

Presentation

Tom Gaffuri presented "Why would a 71 year old man want to start a multi-year multi-decade project?" He has been working on this project since 2018 and hopes to complete construction over the next year.

Next Meetings/Events

Mr. Miller announced the following upcoming Division events:

- **November 1, 2025 9 a.m. to 3 p.m.: Gateway Division Fall Meet**, VFW, 1234 Vandalia Street, Collinsville, IL

Adjourn

Mr. Miller adjourned the business meeting at 8:45 p.m.

Respectfully Submitted,
Jeff Cooper, Clerk, Gateway Division

Meeting Minutes for December 15, 2025

Call to Order

Superintendent Bob Miller called the meeting to order at 7:30 p.m.

New Members/Visitors Recognition

There were no new members or visitors to recognize.

Minutes from the October 20, 2025 Meeting

Mr. Miller presented the minutes from the October 20, 2025 meeting. Jim Ables motioned to approve the minutes as presented. Dave Wehner seconded the motion. *The minutes were approved by unanimous vote.*

Election Results

Mr. Ables presented the election results for Assistant Superintendent, Clerk, and Region Director:

- Assistant Superintendent (2 year term): Dave Wehner. Won 16 to 15 over Dan Knipp.
- Clerk (2 year term): Jeff Cooper. Ran unopposed and received 31 votes.
- Region Director (Remaining 2 years of 3 year term): Greg Gramlich, MMR. Won 16 to 15 over Bill Levin.

Financial Reports

John Kelly presented the October 2025 and November 2025 financial statements and reported the balances in the bank account and CDs, as well as various expenses and receipts during the past month.

Southern Illinois Model Train Meet Update

Walter Beckman reported that as of December 15, 2025, 25 vendor tables have been sold with another 7 to 10 with commitments. It is expected the number will grow further with late additions. The Gateway Division project layout will be set up along with the Jefferson County & Southern layout. Mr. Beckman is working with the New Switzerland club to have their layout in Marion also. A member suggested contacting the Mudhens to see if they would be willing. Mr. Cooper is contacting the person who owns the Santa Fe All the Way modular layout to see if there is any interest in setting up in Marion.

Division Modular Layout Update

Willie Richter updated membership on the Division Modular Layout project. Mr. Richter noted that the malines are up and running with sidings still needing to be installed. The yard at West Alton is in place. The layout is setting is West Alton to Hannibal Missouri. Some members have expressed interest in building Free-Mo modules of areas outside of this setting. Finally, Mr. Richter reported that the layout was set up and operating for Santa Claus Day at West Alton City Hall it ran flawlessly for over 2.5 hours of continuous running. Additionally, Mr. Richter is considering presenting a clinic at the Southern Illinois Model Train Meet on building modules since the layout will be set up that day.

Club Updates

A member noted that the St. Charles Model Railroad Club has 50 members but only 2 belong to the NMRA. Members discussed ideas for attracting the non-members including conventions, member meetings with presentations/clinics, hands-on workshops, and other Division events.

Ask Us Anything

There were no questions asked of the members.

Other Business

Mr. Ables announced that the 2026 Mid-Continent Region Convention will coincide with the St. Louis RPM. Admission to the RPM will be included with the convention registration. There will be a contest room, a banquet or luncheon, and more details to come. The convention will be July 23rd through the 25th. This is one week before the National Convention in Chattanooga.

Upcoming Events

Mr. Miller announced the following upcoming events:

- **December 27, 2025 10 a.m. to 2 p.m.: After the Storm Train Show**, Arnold Eagles Hall, 1725 Jeffco Blvd, Arnold, MO
- **December 27, 2025 10 a.m. to 6 p.m.: Brian Post's Sierra Nevada & Indian River Railway Open House**, 248 Pardella, St. Louis, MO
- **January 3, 2026 10 a.m. to 3 p.m.: TrainFair 2026**, St. Charles West High School, 3601 Droste Road, St. Charles, MO

50/50 Drawing

The 50/50 drawing was held and Dave Wehner was the winner.

Presentation

Several attendees participated in the annual Bring and Brag. They showed off their models and discussed their modeling techniques used to build the models.

Next Meetings/Events

Mr. Miller announced the following upcoming Division event:

- **January 19, 2026, 7:30 p.m. Member Meeting and Presentation**, Oakville Elks Lodge, 2726 Oakville Elks Lane, St. Louis MO

Adjourn

Mr. Miller adjourned the business meeting at 8:40 p.m.

Respectfully Submitted,
Jeff Cooper, Clerk, Gateway Division



More freight cars by
Don Schnurpfel in the contest
room at the Gateway Division
2025 Fall Meet

Photo by: Jeff Cooper

NMRA

Gateway Division

**Fall 2025 and Winter 2026:
Volume 33, Numbers 3 & 4**

The RPO is the official publication of the Gateway Division of the National Model Railroad Association

Editor: Jeff Cooper

Articles, photos and any other materials for publication are to be sent to the Editor. No payment can be made for publication of any materials. Regular issues are published quarterly: Spring, Summer, Fall, and Winter. Distribution of the RPO are available to members of the NMRA as a service provided by members of the Gateway Division.

Any item may be reproduced by other NMRA publications, unless specifically restricted, as long as author and source credit is included.

Articles may be submitted as handwritten, typed, plain unformatted text on paper, USB flash drive, or via email to the editor. Photo submissions may be made as digital files or as prints. Submissions can be e-mailed to the editor at:

rpeditor@outlook.com

If your submission will be by a method other than e-mail, please contact Jeff Cooper at 618-889-8907 by call or text.

Submission deadlines:
Spring: April 1
Summer: July 1
Fall: October 1
Winter: January 1

All content is Copyright © 2026 Gateway Division NMRA unless otherwise noted.

Division Officers

Superintendent

Bob Miller
Festus, MO

Assistant Superintendent

Dave Wehner
Eureka, MO

Clerk (Secretary)

Jeff Cooper
Marion, IL

Paymaster (Treasurer)

John Kelly
Fenton, MO

Division Director

Greg Gramlich, MMR
Wentzville, MO

Past-Superintendent

Jim Ables
Mascoutah, IL

Division Chairs

Achievement Program

Dave Ackmann

Activities

Vacant

Presentations

Dan Knipp

Contests

David Lowell, MMR

Fall and Spring Meets

Walter Beckman

IT

Willie Richter

Layout Tours

Dave Roeder, MMR

Membership

Glenn Koproske

Operations

Greg Gramlich, MMR

Publicity

Fred Wilke

Division Free-Mo Layout

Greg Gramlich, MMR

Webmaster

Robyn Yates, RKY Services



A scene from the Jefferson County & Southern at the Gateway Division 2025 Fall Meet.

Photo by Jeff Cooper

Club Directory



Mississippi Valley N Scalpers

The **Mississippi Valley N Scalpers** LLC model railroad club was founded in April of 1990. It is

the oldest exclusive N scale club in the St. Louis Metro area. The club owns both fixed and modular (NTRAK and T-TRAK) layouts. Their members come from both sides of the Mississippi river. They share a common love of model railroading and a sincere interest in sharing their knowledge and expertise with fellow members. If you would like to join, you can attend a meeting or visit <http://mvns.railfan.net/> for more information.



The **Big Bend Railroad Club** is a 2-Rail O Scale model railroad club that started in 1938 and is located at the Frisco depot at 8833 Big Bend Boulevard in Webster Groves, MO. The club

operates for the public on the first Tuesday of the month (Except holidays) from 7:00 PM until around 8:30 PM, with extra nights in December, and other days for special occasions. They meet each Tuesday at the station. The public is welcome to drop by on any Tuesday evening and have a look around, but be aware that there may not be any activity on the layout other than the ongoing repair work. For more information, visit <http://www.bigbendrclub.org>



Gateway Free-Mo is a group of model railroaders in the Midwest centered around the St. Louis, MO area (100-200 mile radius). The group consists of

model railroaders that are interested in prototypical modeling using the Free-Mo modular concept to build, assemble, and operate a model railroad. Midwest railroad prototypes, such as MP, RI SLSF, Wabash, C&NW, L&N, and GM&O, as well as the modern empires such as NS, UP, and BNSF are emphasized and Midwest scenes are featured on the layout. The group has a Facebook Group called Gateway Free-Mo. For more information, contact Ricky Keil at 314-591-0152, message through the Facebook Group or e-mail rkeil6721@hotmail.com



The Mudhens are a club promoting narrow gauge railroading modeled in HO scale. They are dedicated to high quality modeling, improving skills,

and enhancing others enjoyment of model railroading. New members and visitors are always welcome. A featured sectional group of tables exists in St. Louis, MO and consists of an eight-table loop plus one table for connecting a branch line. Other fine modular and sectional groups exist in Arizona, Illinois, Texas, and Colorado. If you are interested in learning more about The Mudhens or becoming a member, visit <https://www.themudhens.org/>



Do you like to operate, collect, or just want to learn more about Lionel and other types of O-Gauge Model Trains? The **Lionel Railroad Club of St. Louis** may be the club for you! The Club has two portable layouts that they display at various

venues throughout the year. As a member you can work on and operate your trains on any of these layouts. Membership benefits also include access to train related DVDs, books, and magazines, programs on railroads of today and yesterday, and exclusive club products such as die cast vehicles, shirts, hats, mugs, and Club Lionel Licensed Cars. For more information visit <http://www.lionelrrclubstl.com>



The **St. Louis Live Steamers** is an organization interested in the construction of large scale model railroads, in steam railroad history and operations, and in steam technology generally. The SLLS seeks to share these interests with

the general public and provide opportunities in the community for everyone to learn about steam railroad history and technology. Their trains are 1/8 scale, also known as 1.5 inches to the foot. The rails are spaced 7.5 inches apart and a section of the railroad has an additional rail spacing of 4.75 inches to accommodate one-inch scale equipment. For more information visit <http://www.stlouislivesteamers.org/>

Club Directory



The purpose of the **St. Charles Model Railroad Club** is to enjoy the hobby of Model Railroading in a group setting and promoting the hobby to the general public. It is their goal to enhance the enjoyment of the hobby for the members through the discussion of history and current events in the hobby, through the study of prototype railroads so that the members may apply that knowledge to their modeling, and to provide a forum where new ideas and techniques in modeling may be explored. The current club layout is the traditional permanent type. For more information visit <https://www.stcharlesrailroadclub.org/>.



The **Gateway Garden Railroad Club** continues to grow and includes the entire St. Louis area. There are even several out-of-town members. The club participates in many shows and special events each year. Also, the club currently maintains the

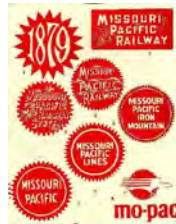
Large Scale Railroad that is suspended from the ceiling in the crossover from the garage entrance to Children's Hospital on Kingshighway in St. Louis. All big train enthusiasts are encouraged to join: Collectors, rivet counters, garden railroaders, indoor railroaders, live steamers, etc. We are an equal opportunity club; just bring your love of big trains. For more information visit <http://ggrrc.com/>.

K-10's Model Trains Maryville, Illinois

K-10's Model Trains is a hobby shop with a 60' x 81' layout attached to the shop. The purpose of the layout is to demonstrate new products and techniques. The layout room includes a dispatcher and observation platform that is handicapped accessible. The layout includes three major railroads (ATSF, UP & SP) that all interchange with each other, two short lines, and five major industries. Adult train running will start at 7 p.m. every Thursday night with the third Thursday night being "OPS" night. Saturday adult volunteer train running will start about 1 p.m. 2023 Sunday Kids Train Running is TBA depending on better local Covid and Flu conditions. For more information visit <https://www.k-10smodeltrains.com/>



The **Metro East Model Railroad Club** is located in Glen Carbon, IL. The HO scale layout is 18'6" wide by 27'6" long and has roughly 1000' of track on several levels. It includes a freight yard, a passenger yard, and a staging yard. The upper level features a depiction of the Glen Carbon area in the 1940's. The lower levels feature the club's fictitious 'Glen Carbon Central' Railroad, a large steel mill, and a coal mine. The club holds regular business meetings in the Glen Carbon Library on the first Thursday of each month at 6:30 p.m. In addition, work/play sessions are held every non-1st Thursday at 6:30 p.m. For more information visit <http://www.trainweb.org/memrc/>.



The **Jefferson County and Southern Model Railroad Club** is an HO scale model railroad club that models the Bonne Terre Railroad (Missouri-Illinois/Missouri Pacific). The club's display layout is a 14-by-44-foot section of a larger layout. It features a dual main line and Jefferson County and Ozark-type scenery. They typically have monthly meetings on the second Tuesday of each month. Modelers interested in joining may become provisional members for a year and then may be promoted to club member. For more information, check out the club Facebook page. Those interested in joining can send an email to Bob Miller at bobnjoanstlmo@gmail.com.

Don't see your club listed? Send us your club information to rpoeditor@outlook.com and we will include it in the next issue!

Local Hobby Shop Directory

Castle Trains and Treasures

4782 Old Jacksonville Road
Springfield, IL 62711
(217) 793-0407

Meadow Ridge Trains & Hobbies

520 E State Street
Jefferson City, MO 65101
(573) 395-4910
Follow on Facebook

Red Board Hobbies

2331 Old Collinsville Rd #C
Belleville, IL 62221
(618) 233-3618
redboardhobbies.com

Chuck's Depot

1913 West Rendleman
Marion, IL 62959
(618) 993-9179

Please Support Your Local Hobby Shop

Don't see your shop listed?
Send us your information to
rpoeditor@outlook.com and
we will include it in the next
issue!

Rodney's Trains & Toys

9622 Gravois Road
St. Louis, MO 63123
(314) 638-8250
Follow on Facebook

Frisco Train & Toy Store

24 Front Street
Valley Park, MO 63088
(636) 529-1660
friscotrainstore.com

Schaefer's Hobby Shop

11659 Gravois Road
St. Louis, MO 63126
(314) 729-7077
schaeferhobby.com

K-10's Model Trains

19 Schiber Court
Maryville, IL 62062
(618) 288-9720
k-10smodeltrains.com



TAG Trains

Flora, IL
Visit tagtrains.net or follow
on Facebook to see their
train show schedule or to
submit an inquiry

Mainline Model Railroad Products

2436 Denver Drive
Springfield, IL 62702
(217) 679-1945
Follow on Facebook



Target Model Train Company

3323 Lemay Ferry Road
Lemay, MO 63125
(314) 200-3021
Follow on Facebook

Mark Twain Hobby Center

2793 W Clay Street
St. Charles, MO 63301
(636) 946-2816
hobby1.com

Neal's N-Gauging Trains

100 W Main Street
Staunton, IL 62088
(618) 635-2525
nealsngauge.com

Train Town

9832 Manchester Road
St. Louis, MO 63119
(314) 716-2755
Follow on Facebook